

Barco tipo granelero

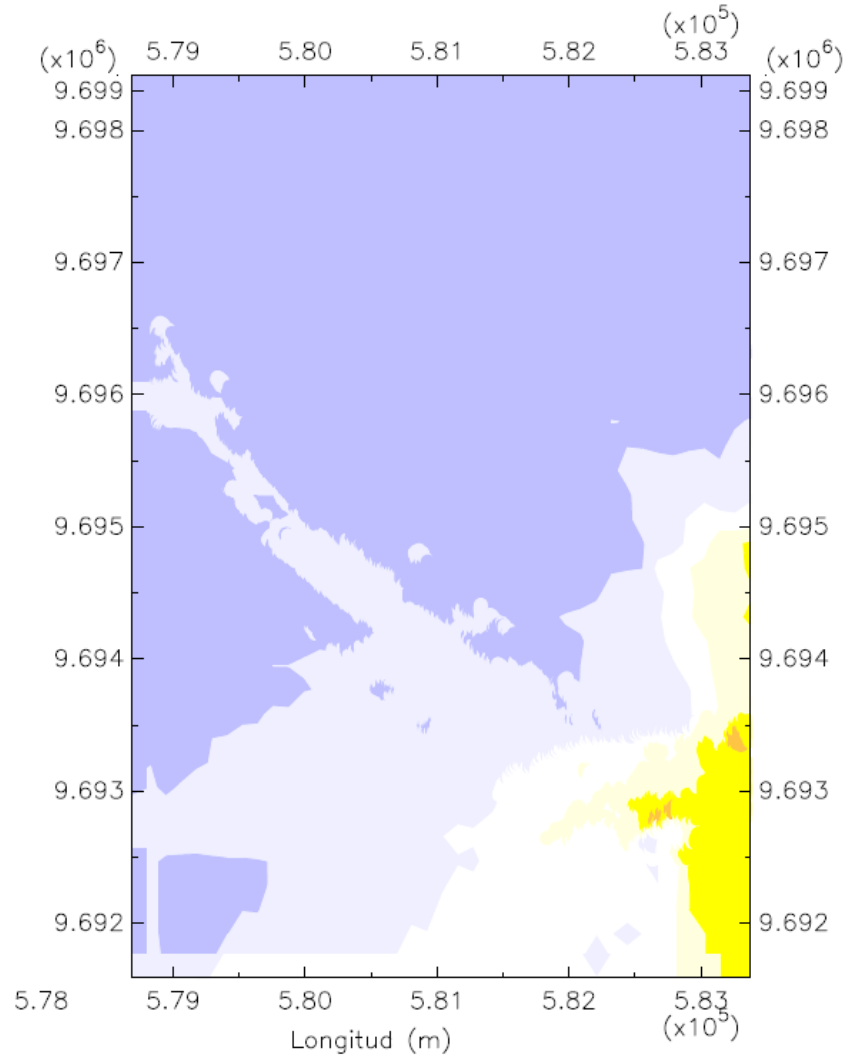
Eslora: 225 m

Manga: 32.20 m

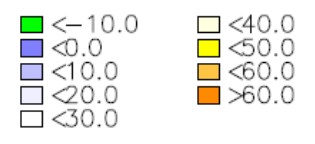
Calado: 12 m

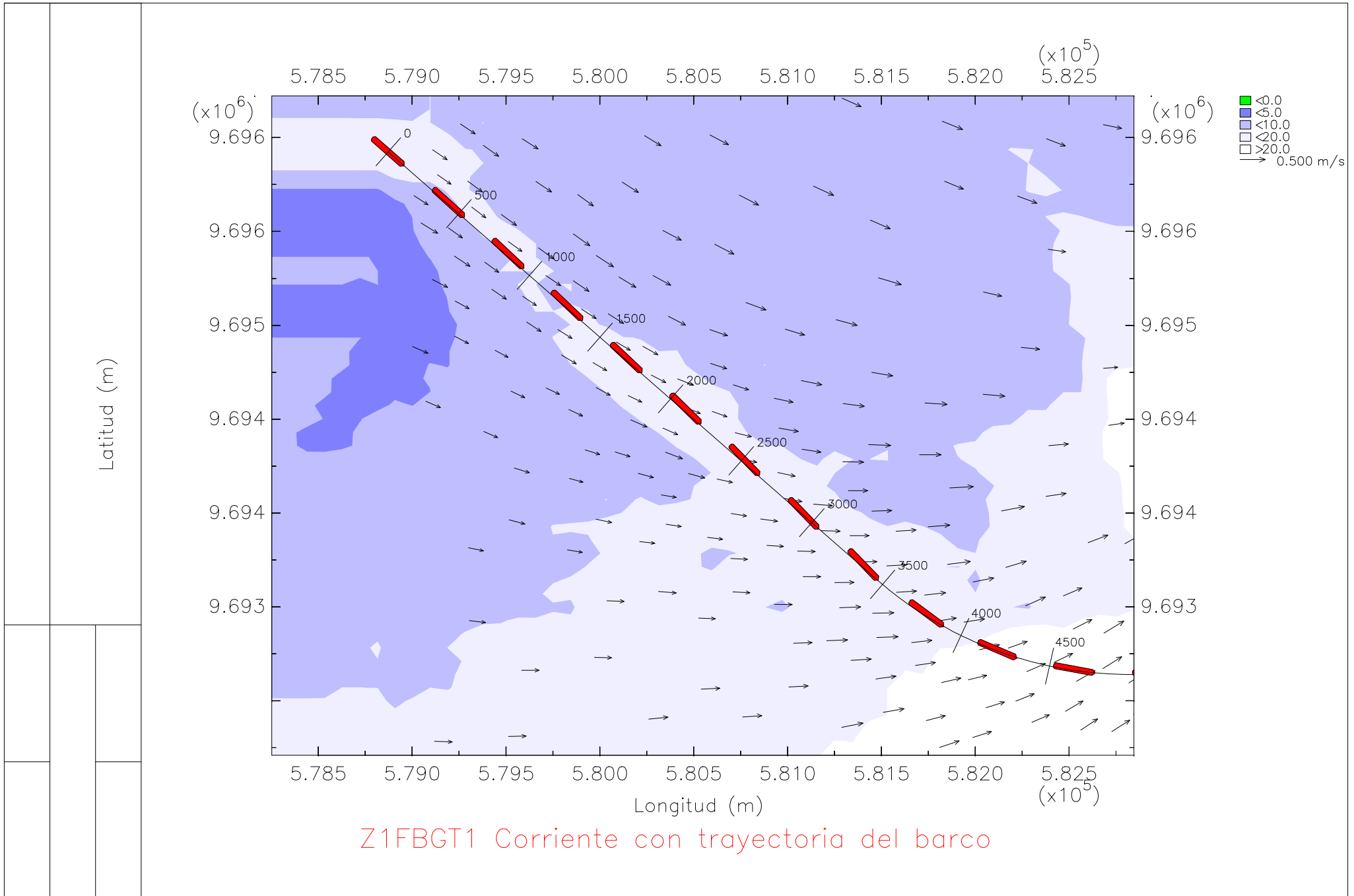
En la zona 1, tramo 1

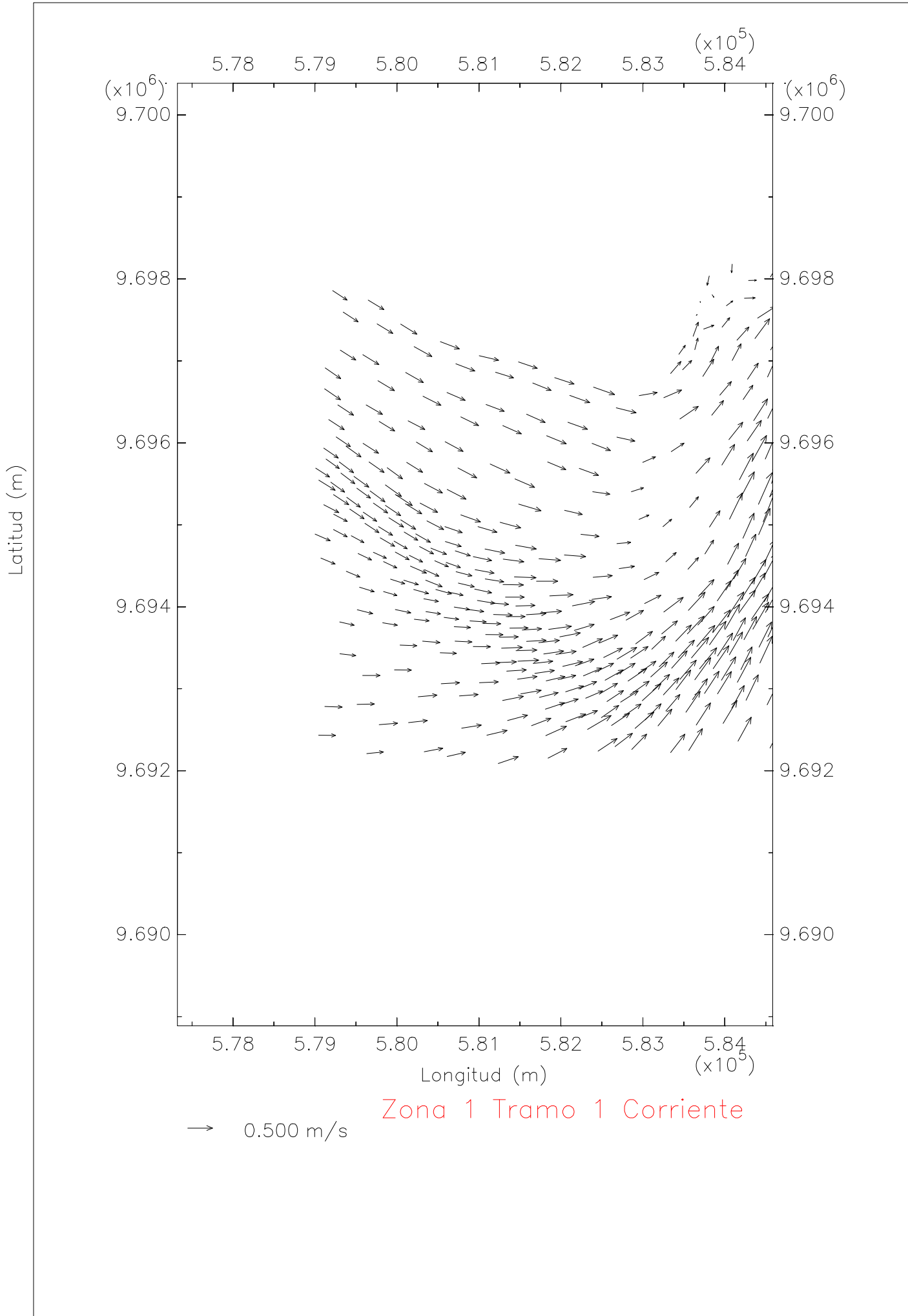
Bajo condiciones de llenante

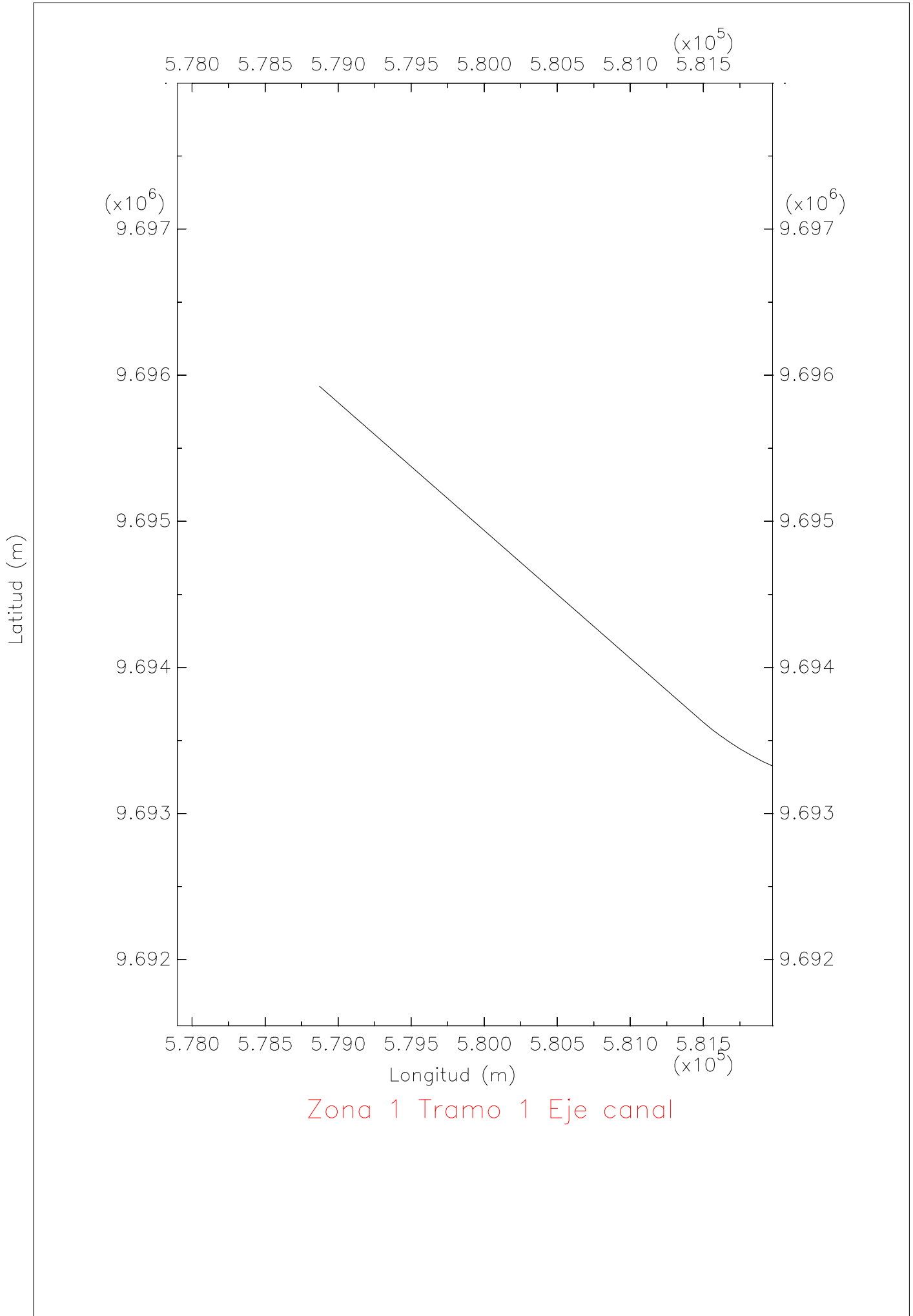


Zona 1 Tramo 1 Profundidad

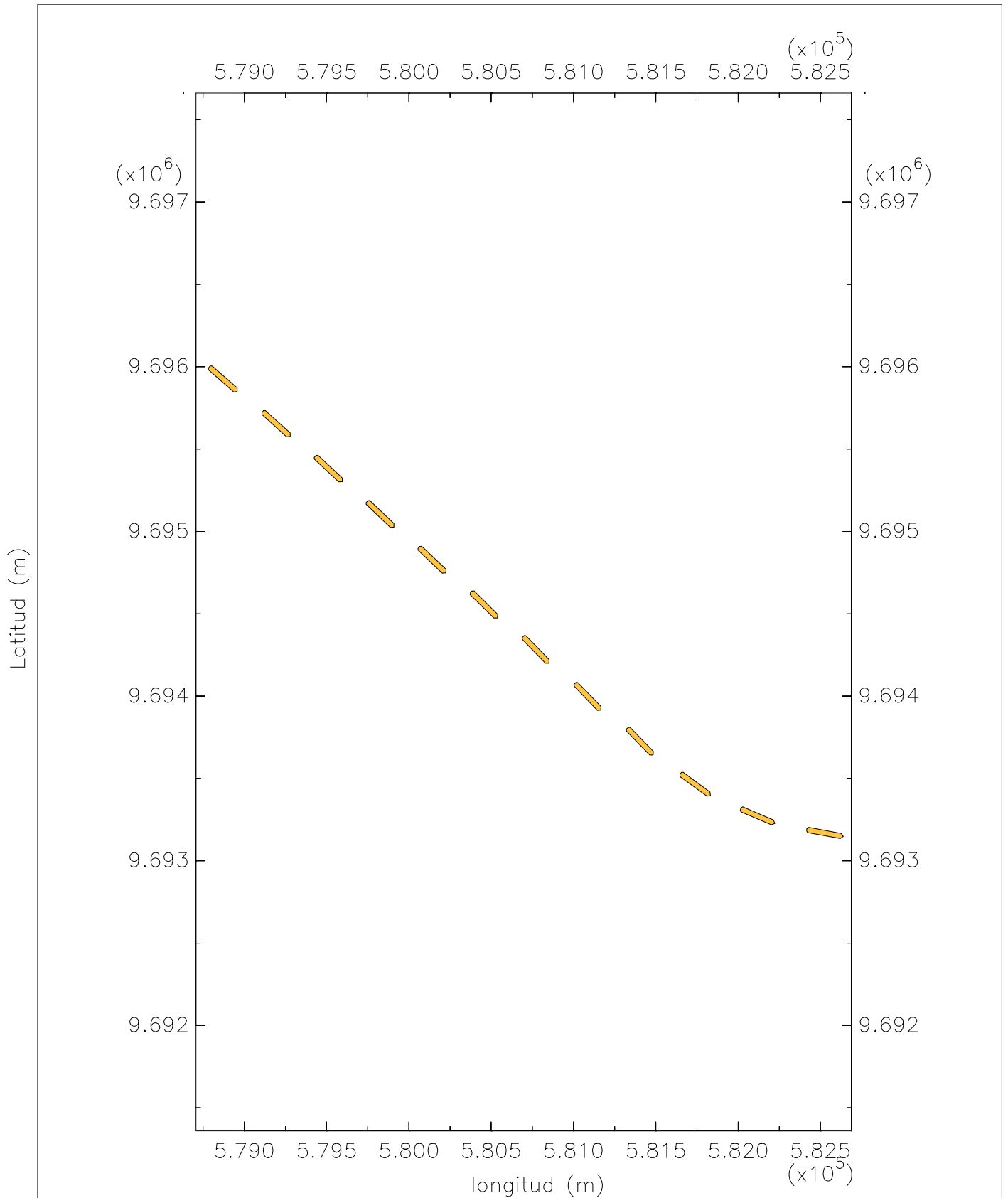






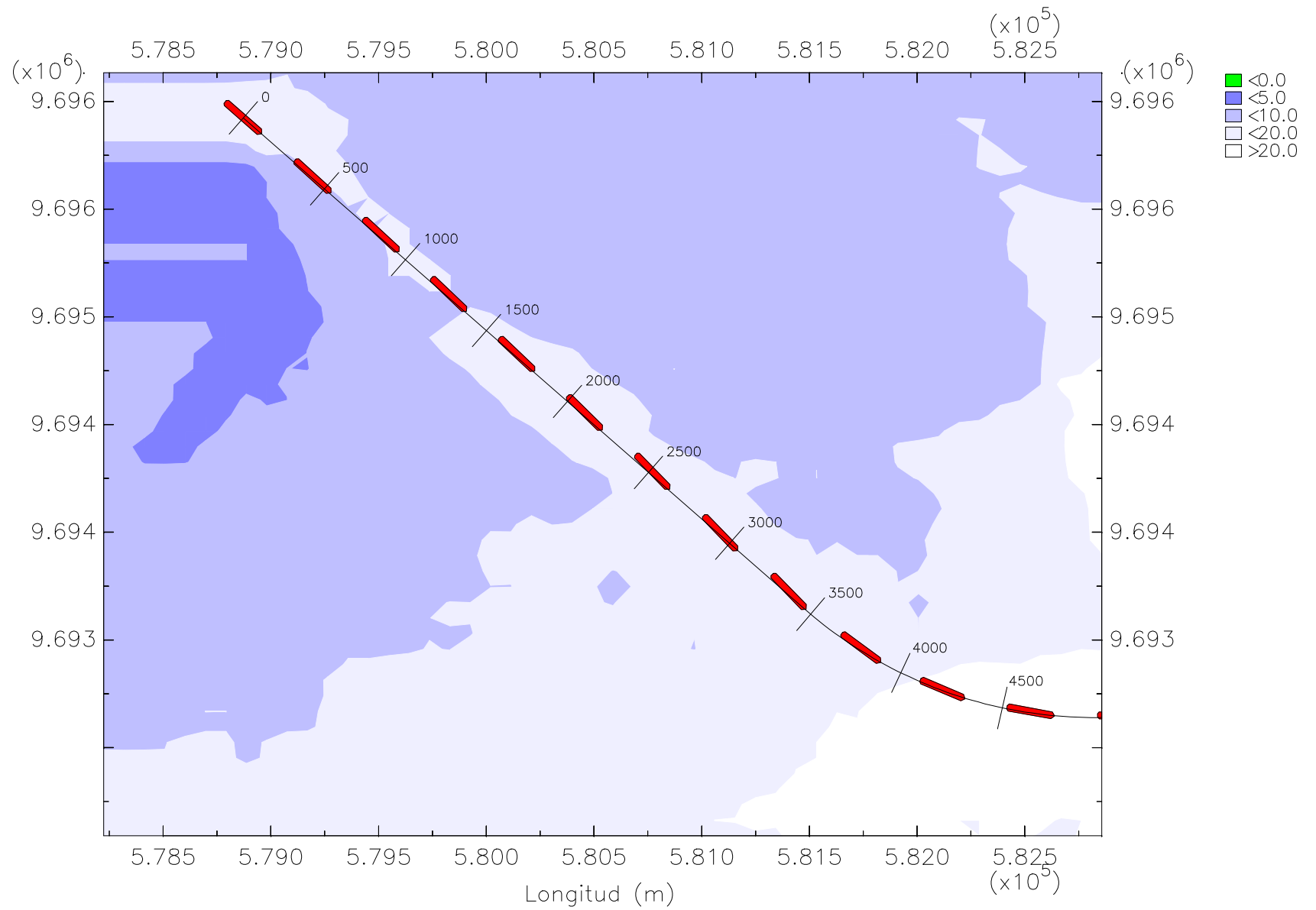


Zona 1 Tramo 1 Eje canal



Zona 1 Tramo 1 Trayectoria del barco granelero

Latitud (m)



Z1FBGT1 Trayectoria del barco con profundidad